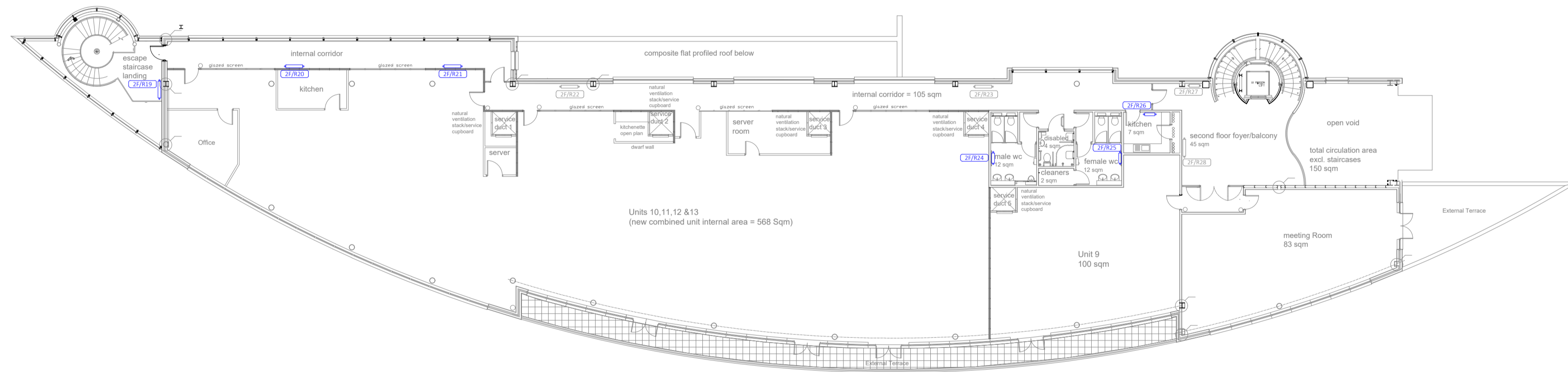


1 2 3 4 5 6 7 8 9 10 11 12 13 14

A
B
C
D
E
F
G
H
I
J
K
L

The contents of this drawing remain the property of GeoEnergy Design Ltd (GED). The copyright in hardcopy and electronic form remain vested in GED and may not be copied, reproduced, retained or disclosed by any unauthorized person either wholly or in part without the written consent of GED. Unless stated otherwise in the title block, this drawing is issued for information only and may not be used for any other purpose without the prior written permission of GED. GED will not be held responsible for injury or any claim based on the information in this drawing. A drawing for installation purposes shall be used in conjunction with any relevant H&S Risk Assessments and Method Statements. Do not scale from this drawing. All dimensions shall be verified on site.

- NOTES:
- 1) Drawing to be read in conjunction with all relevant project documentation. should any discrepancies be found, clarification must be sought at the earliest convenience.
 - 2) Report any obvious drafting errors, omissions or changes in/to this drawing to GED.
 - 3) Heat emitter layout and pipework is indicative and to be coordinated at detailed design stage.
 - 4) See heat emitter schedule UW3396-GED-T2-ZZ-SH-M-0002 for details of heat emitter sizes



| | | | |
|----------------------------|----------|----|-------------|
| P01 | 20.03.26 | JO | HT |
| Issued for initial comment | | | |
| REV | DATE | BY | CHKD APPVRD |



GeoEnergy Design Ltd
20 St Dunstan's Hill
London
EC3R 8HL

T: +44 (0) 20 3457 1412
E: info@geoenergy.co.uk
W: www.geoenergy.co.uk
VAT no. 390 961 469

CLIENT:
Arthian

PROJECT:
**University of Wales
Technium 2**

DRAWING TITLE:
**Heat Emitter Layout
Second Floor**

| | | |
|------------------------------------|-----------------------------|-------------------------|
| SUITABILITY: S2 - RIBA 3 | SCALE @ A1: 1:200 | REVISION: P01 |
|------------------------------------|-----------------------------|-------------------------|

DRAWING NUMBER:
UW3396-GED-T2-02-DR-M-0003